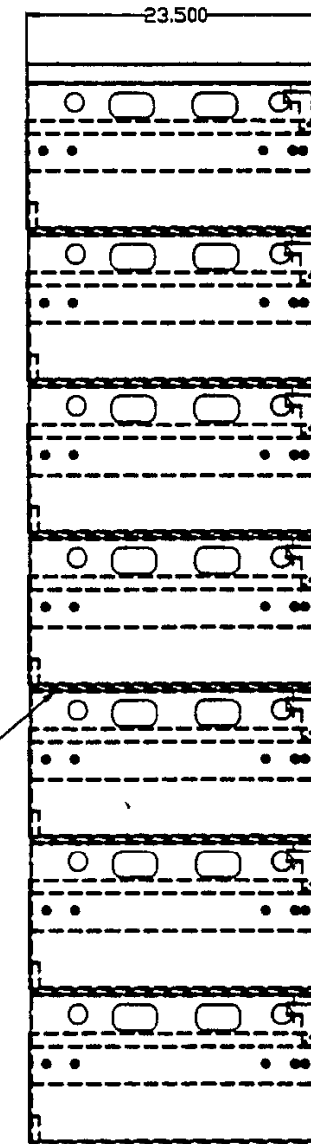
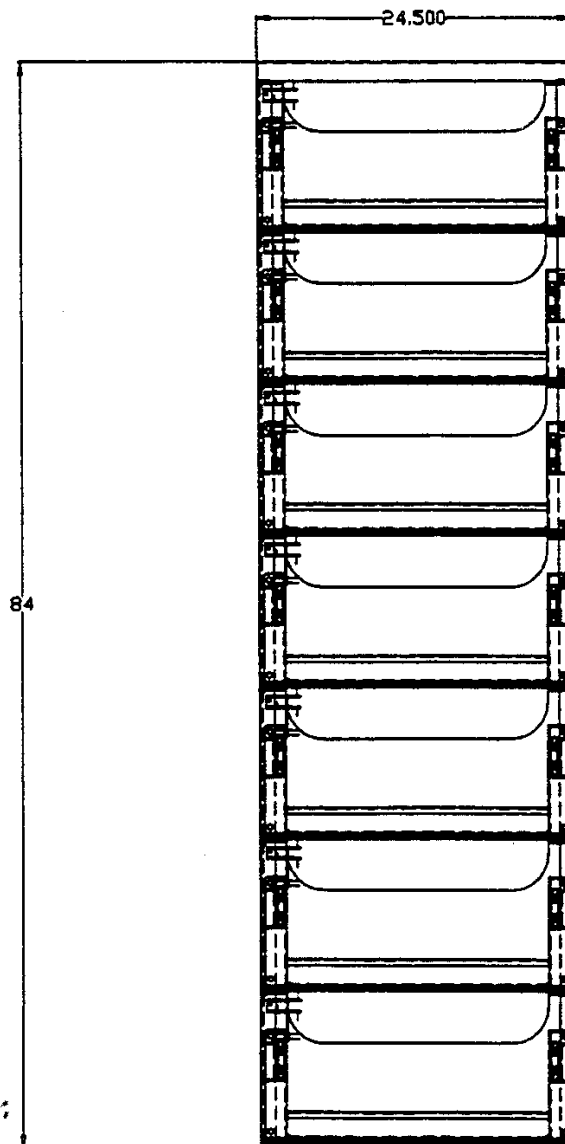
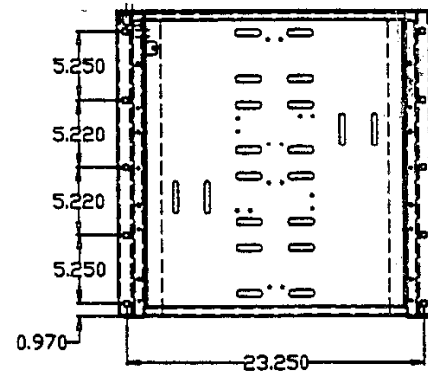


DUST COVER
REMOVED FOR CLARITY

REVISIONS			
ZONE/LTR	DESCRIPTION	DATE	APPROVED



SCREW DRAWER TO
FRAME USING #3/8-16
BOLTS (GRD. 5) X 1" LG.
WITH A #3/8" LOCKWASHER
AND A #3/8" FLATWASHER
(4X PER SHELF)

ASSEMBLE SHELVES AND DUST COVER
USING THE FOLLOWING HARDWARE PER SHELF:
#3/8-16 X 1" LG. (GRD.#5) CARRIAGE BOLT (10X)
#3/8 FLATWASHER (10X)
#3/8 LOCKWASHER (8X)
#3/8 "SHAKEPROOF" WASHER (2X)(REAR HOLES)
#3/8-16 (GRD.#5) HEX NUT (10X)

NOTES:
FINISH-EPOXY POWDER, ASA 61 GREY
ASSEMBLY IS QUALIFIED AND
CERTIFIED FOR UBC SEISMIC ZONE 4
COVER INCLUDES RELAY RACK MOUNTING
HOLES
■ BATTERY HOLDDOWNS AS REQ.

THIS DOCUMENT CONTAINS PROPRIETARY DATA
OF SHI AND JCI. NO DISCLOSURE, REPRODUCTION,
OR USE OF ANY PART THEREOF MAY BE MADE
WITHOUT WRITTEN PERMISSION. THIS IS A CAD
GENERATED DRAWING. NO MANUAL CHANGES
ALLOWED.

BILL OF MATERIALS			
QTY	ITEM	PART NUMBER	DESCRIPTION
28	5	MHD70-90	BATTERY HOLDDOWN (NOT SHOWN)
14	4	MHD30-45	BATTERY HOLDDOWN (NOT SHOWN)
1	3	MRDC-S	DUST COVER
6	2	MRT-S	Z-4 SLIDING BATTERY SHELF-TIER
1	1	MRB-S	Z-4 SLIDING BATTERY SHELF-BASE

UNLESS OTHERWISE SPECIFIED DIMENSIONS ARE IN INCHES TOLERANCES UNLESS NOTED ARE ± 0.005 3 PLACE DECIMALS & 0.000 2 PLACE DECIMALS & 0.00		CONTR. DRAWN RVG 6/18/97 CHECKED APPROVED DSON ACT APPL	JOHNSON CONTROLS, INC. SPECIALTY BATTERY (TEL12-30/12-90) Z-4 MODULAR SINGLE BAY SYSTEM - 7 TIER		SIZE D	CODE IDENT NO. SBMS-7T	REV. -
NEXT ASSY	USED ON	FINISH: AS NOTED	DSON ACT APPL	GOVT ACT APPL	SCALE:	SHEET 1 OF 1	