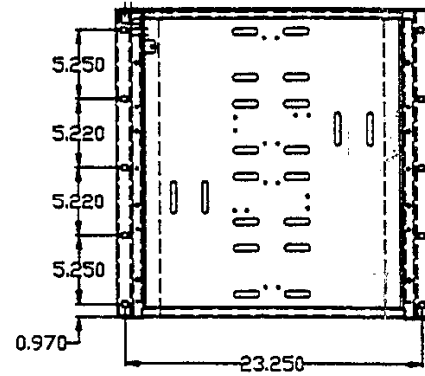
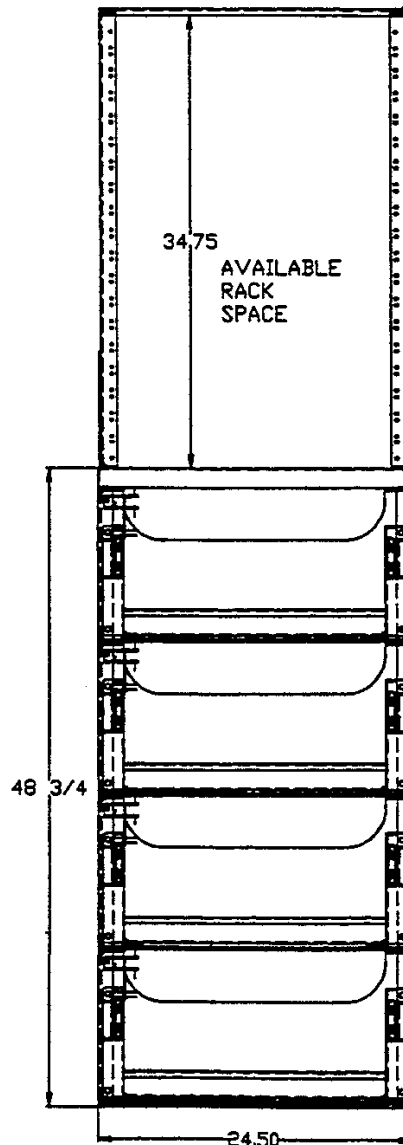


DUST COVER  
REMOVED FOR CLARITY



ASSEMBLE THE CROSSMEMBER TO THE UPRIGHTS USING THE FOLLOWING:  
#3/8-16 X 1" LG. (GRD. #5) CARRIAGE BOLT (4X)  
#3/8 FLATWASHER (4X)  
#3/8 LOCKWASHER (4X)  
#3/8-16 (GRD. #5) HEX NUT (4X)

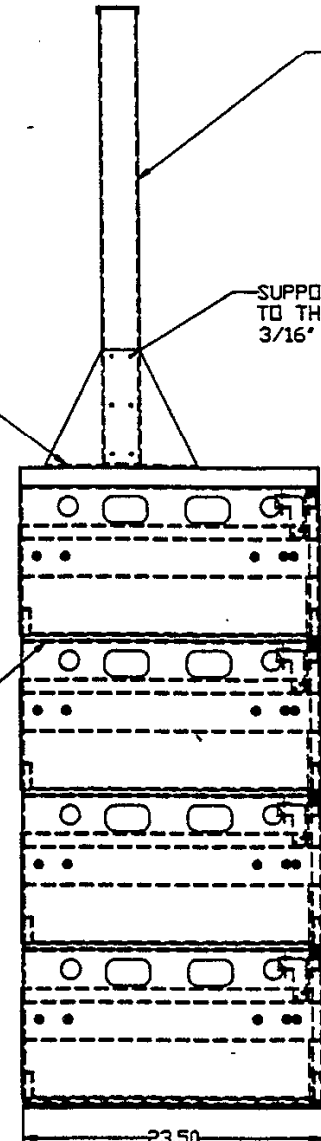


SCREW DRAWER TO FRAME USING #3/8-16 BOLTS (GRD. #5) X 1" LG. WITH A #3/8" LOCKWASHER AND A #3/8" FLATWASHER (4X PER SHELF)

ASSEMBLE SHELVES AND DUST COVER USING THE FOLLOWING HARDWARE PER SHELF:  
#3/8-16 X 1" LG. (GRD.#5) CARRIAGE BOLT (10X)  
#3/8 FLATWASHER (10X)  
#3/8 LOCKWASHER (8X)  
#3/8 "SHAKEPROOF" WASHER (2X)(REAR HOLES)  
#3/8-16 (GRD.#5) HEX NUT (10X)

ASSEMBLE THE RACK TO THE DUST COVER USING THE FOLLOWING:  
#3/8-16 X 1" LG. (GRD. #5) CARRIAGE BOLT (8X)  
#3/8 FLATWASHER (8X)  
#3/8 LOCKWASHER (8X)  
#3/8-16 (GRD. #5) HEX NUT (8X)

SUPPORTS ARE ASSEMBLED TO THE UPRIGHTS USING 3/16" SEMI-TUBULAR RIVETS.



ZONE		LTR		REVISIONS	DATE	APPROVED
				DESCRIPTION		

NOTES:  
FINISH-EPOXY POWDER, ASA 61 GREY  
ASSEMBLY IS QUALIFIED AND CERTIFIED FOR UBC SEISMIC ZONE 4  
COVER INCLUDES RELAY RACK MOUNTING HOLES

\* BATTERY HOLDDOWNS AS REQ.

THIS DOCUMENT CONTAINS PROPRIETARY DATA OF SMT AND JCL. NO DISCLOSURE, REPRODUCTION OR USE OF ANY PART THEREOF MAY BE MADE WITHOUT WRITTEN PERMISSION. THIS IS A CAD GENERATED DRAWING. NO MANUAL CHANGES ALLOWED.

BILL OF MATERIALS			
QTY	ITEM	PART NUMBER	DESCRIPTION
1	6	MRR4-3525	RACK "H"
16	5	MHD70-90	BATTERY HOLDDOWN (NOT SHOWN)
8	4	MHD30-45	BATTERY HOLDDOWN (NOT SHOWN)
1	3	MRDC-S	DUST COVER
3	2	MRT-S	Z-4 SLIDING BATTERY SHELF-TIER
1	1	MRB-S	Z-4 SLIDING BATTERY SHELF-BASE

UNLESS OTHERWISE SPECIFIED DIMENSIONS ARE IN INCHES TOLERANCES FRACTIONS DECIMALS		CONTR.	JOHNSON CONTROLS, INC.	
DRAWN BY: 6/18/97		CHECKED	SPECIALTY BATTERY	
MATERIAL: AS NOTED		APPROVED	(TEL12-30/12-90) Z-4 MODULAR SINGLE BAY SYSTEM - 4 TIER W/RELAY RACK	
FINISH: AS NOTED	GOVT ACT APPVL	DESIGN ACT APPVL	SIZE: D	CODE IDENT NO. SBMS-4TR
NEXT ASSY	USED ON	GOVT ACT APPVL	SCALE:	REV. -
APPLICATION			SHEET 1 OF 1	