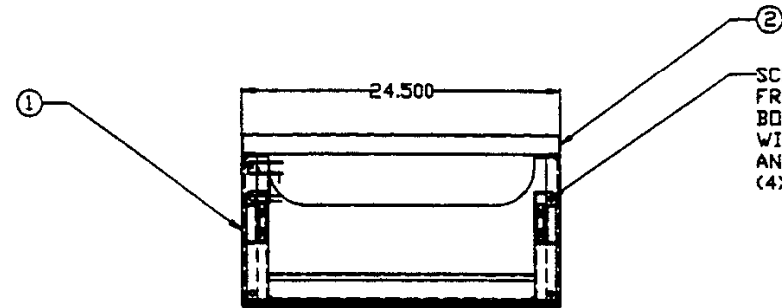
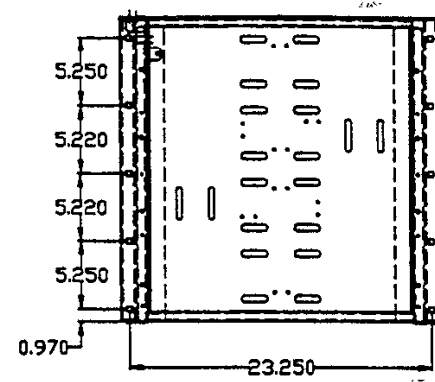
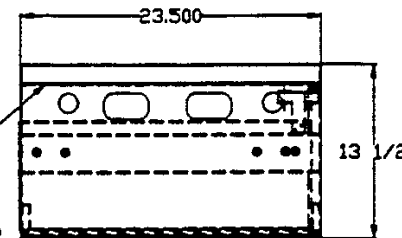


REVISIONS				
ZONE	LTR	DESCRIPTION	DATE	APPROVED

DUST COVER
REMOVED FOR CLARITY



②
SCREW DRAWER TO
FRAME USING #3/8-16
BOLTS (GRD. 5) X 1" LG.
WITH A #3/8" LOCKWASHER
AND A #3/8" FLATWASHER
(4X PER SHELF)



ASSEMBLE DUST COVER USING THE
FOLLOWING HARDWARE:
#3/8-16 X 1" LG. (GRD.#5) CARRIAGE BOLT (10X)
#3/8 FLATWASHER (10X)
#3/8 LOCKWASHER (8X)
#3/8 "SHAKEPROOF" WASHER (2X)(REAR HOLES)
#3/8-16 (GRD.#5) HEX NUT (10X)

NOTES:
FINISH-EPOXY POWDER, ASA 61 GREY
ASSEMBLY IS QUALIFIED AND
CERTIFIED FOR UBC SEISMIC ZONE 4
COVER INCLUDES RELAY RACK MOUNTING
HOLES

■ BATTERY HOLDOWNS AS REQ.

THIS DOCUMENT CONTAINS PROPRIETARY DATA
OF SHFT AND JCI. NO DISCLOSURE, REPRODUCTION,
OR USE OF ANY PART THEREOF MAY BE MADE
WITHOUT WRITTEN PERMISSION. THIS IS A CAD
GENERATED DRAWING. NO MANUAL CHANGES
ALLOWED.

BILL OF MATERIALS			
QTY	ITEM	PART NUMBER	DESCRIPTION
4	4	MHD70-90	BATTERY HOLDOWN (NOT SHOWN)
2	3	MHD30-45	BATTERY HOLDOWN (NOT SHOWN)
1	2	HRDC-S	DUST COVER
1	1	MRB-S	Z-4 SLIDING BATTERY SHELF-BASE

UNLESS OTHERWISE SPECIFIED DIMENSIONS ARE IN INCHES TOLERANCES FRACTIONS DECIMALS FRACTIONS ± 1/16 ± 0.005 ± 0.005 ± 0.005	CONTR. DRAWN RYG 4/18/97	JOHNSON CONTROLS, INC. SPECIALTY BATTERY	
MATERIAL: AS NOTED	CHECKED	(TEL12-30/12-90) Z-4 MODULAR SINGLE BAY SYSTEM - 1 TIER	
NEXT ASSY	APPROVED	SIZE D	CODE IDENT NO. SBMS-1T
USED ON	DSGN ACT APPVL	DRAWING NO. SBMS-1T	REV. -
APPLICATION	GOVT ACT APPVL	SCALE	SHEET 1 OF 1