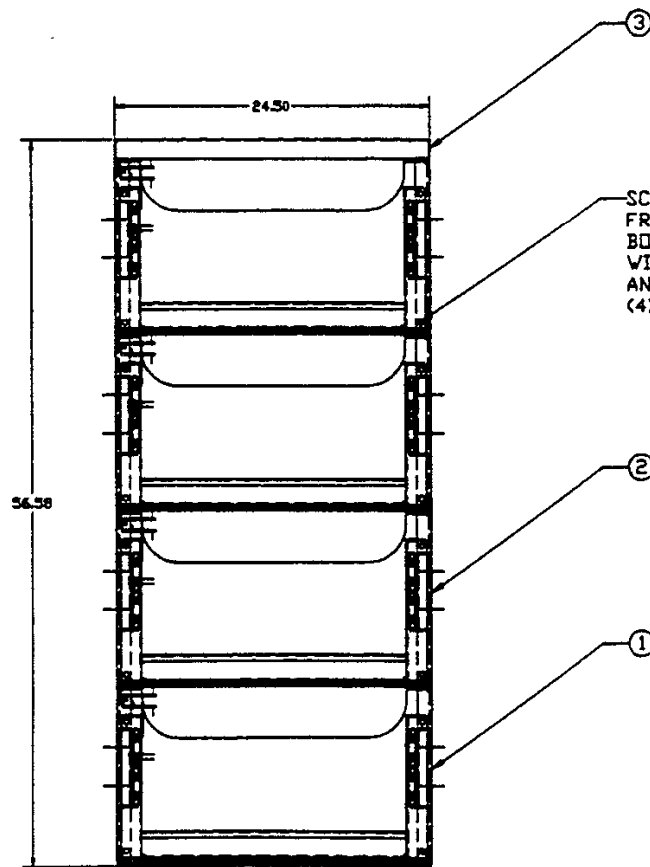
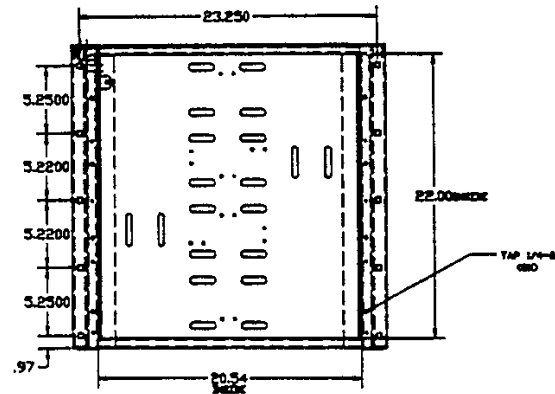
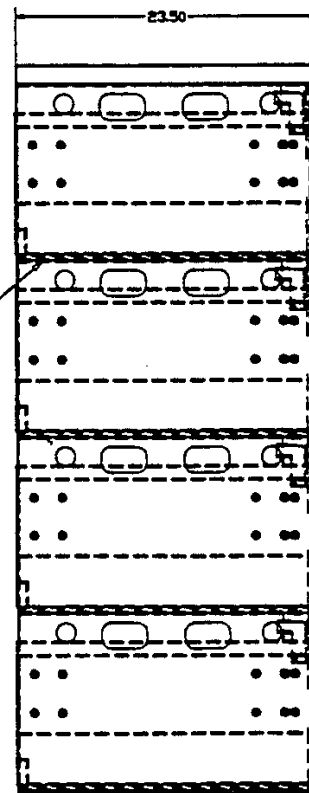


DUST COVER
REMOVED FOR CLARITY



SCREW DRAWER TO
FRAME USING #3/8-16
BOLTS (GRD. 5) X 1" LG.
WITH A #3/8" LOCKWASHER
AND A #3/8" FLATWASHER
(4X PER SHELF)

ASSEMBLE SHELVES AND DUST COVER
USING THE FOLLOWING HARDWARE PER SHELF:
#3/8-16 X 1" LG. (GRD.#5) CARRIAGE BOLT (10X)
#3/8 FLATWASHER (10X)
#3/8 LOCKWASHER (8X)
#3/8 "SHAKEPROOF" WASHER (2X)(REAR HOLES)
#3/8-16 (GRD.#5) HEX NUT (10X)



REVISIONS			
ZONE	LTR	DESCRIPTION	DATE

NOTES:
FINISH-EPOXY POWDER, ASA 61 GREY
ASSEMBLY IS QUALIFIED AND
CERTIFIED FOR UBC SEISMIC ZONE 4
COVER INCLUDES RELAY RACK MOUNTING
HOLES

THIS DOCUMENT CONTAINS PROPRIETARY DATA
OF SAFT AND JCI. NO DISCLOSURE, REPRODUCTION
OR USE OF ANY PART THEREOF MAY BE MADE
WITHOUT WRITTEN PERMISSION. THIS IS A CAD
GENERATED DRAWING. NO MANUAL CHANGES
ALLOWED.

BILL OF MATERIALS			
QTY	ITEM	PART NUMBER	DESCRIPTION
16	4	MHD125-180	BATTERY HOLDOWN (NOT SHOWN)
1	3	MRDC-L	DUST COVER
3	2	MRT-L	Z-4 SLIDING BATTERY SHELF-TIER
1	1	MRB-L	Z-4 SLIDING BATTERY SHELF-BASE

MATERIAL:		CONTR.	JOHNSON CONTROLS, INC.
FINISH:		DRAWN BY: 6/18/97	SPECIALTY BATTERY
NEXT ASSY USED ON:		CHECKED:	(TEL12-125/6-180)Z-4 MODULAR
APPLICATION:		APPROVED:	SINGLE BAY SYSTEM - 4 TIER
		DSGN ACT APPV.	SIZE CODE IDENT NO. DRAWING NO. REV.
		GOVT ACT APPV.	D SBML-4T -
		SCALE:	SHEET 1 OF 1