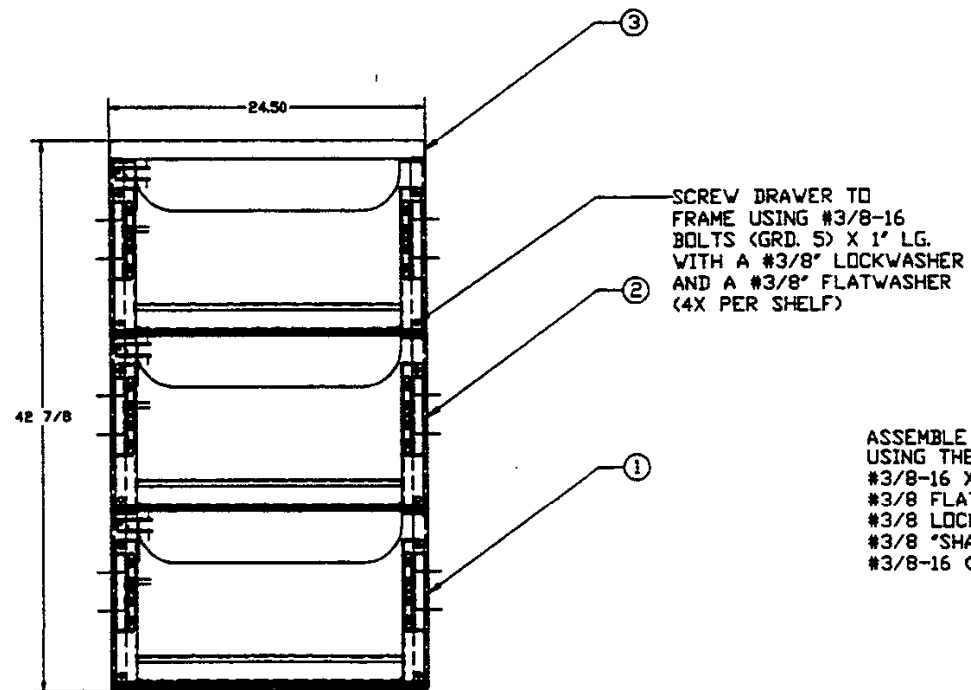
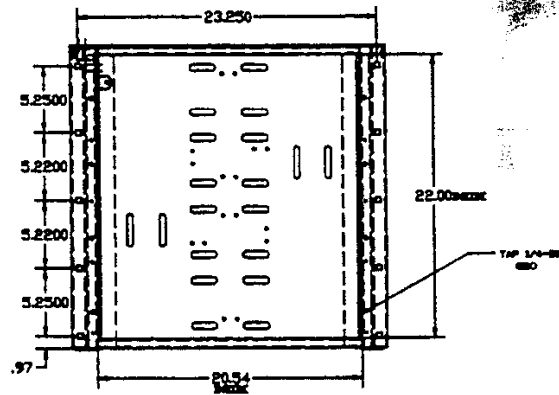
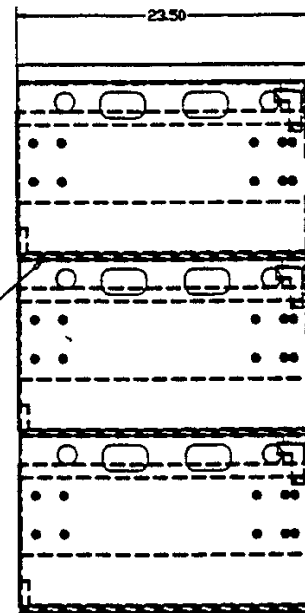


DUST COVER
REMOVED FOR CLARITY



③ SCREW DRAWER TO
FRAME USING #3/8-16
BOLTS (GRD. 5) X 1' LG.
WITH A #3/8" LOCKWASHER
AND A #3/8" FLATWASHER
(4X PER SHELF)

① ASSEMBLE SHELVES AND DUST COVER
USING THE FOLLOWING HARDWARE PER SHELF:
#3/8-16 X 1' LG. (GRD.#5) CARRIAGE BOLT (10X)
#3/8 FLATWASHER (10X)
#3/8 LOCKWASHER (8X)
#3/8 "SHAKEPROOF" WASHER (2X)(REAR HOLES)
#3/8-16 (GRD.#5) HEX NUT (10X)



NOTES:
FINISH-EPOXY POWDER, ASA 61 GREY
ASSEMBLY IS QUALIFIED AND
CERTIFIED FOR UBC SEISMIC ZONE 4
COVER INCLUDES RELAY RACK MOUNTING
HOLES

THIS DOCUMENT CONTAINS PROPRIETARY DATA
OF SAFT AND JCI. NO DISCLOSURE, REPRODUCTION
OR USE OF ANY PART THEREOF MAY BE MADE
WITHOUT WRITTEN PERMISSION. THIS IS A CAD
GENERATED DRAWING. NO MANUAL CHANGES
ALLOWED.

BILL OF MATERIALS			
QTY	ITEM	PART NUMBER	DESCRIPTION
12	4	MHD125-180	BATTERY HOLDDOWN (NOT SHOWN)
1	3	MRDC-L	DUST COVER
2	2	MRT-L	Z-4 SLIDING BATTERY SHELF-TIER
1	1	MRB-L	Z-4 SLIDING BATTERY SHELF-BASE

UNLESS OTHERWISE SPECIFIED DIMENSIONS ARE IN INCHES TOLERANCES UNLESS NOTED FRACTIONS & 1/16 2 PLACE DECIMALS & .00 3 PLACE DECIMALS & .000	CONTR. DRAWN RVG 6/18/97 CHECKED APPROVED DGM ACT APPV. COPY ACT APPV.	APPLICATION	USED ON	FINISH:
--	---	-------------	---------	---------

JOHNSON CONTROLS, INC. SPECIALTY BATTERY			
(TEL12-125/6-180)Z-4 MODULAR SINGLE BAY SYSTEM - 3 TIER			
SIZE	CODE IDENT NO.	DRAWING NO.	REV.
D		SBML-3T	-
SCALE:			SHEET 1 OF 1