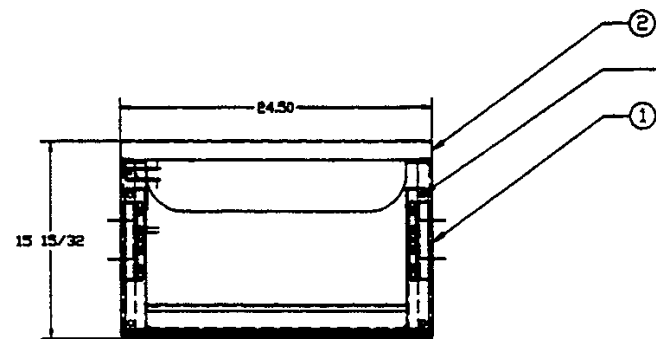
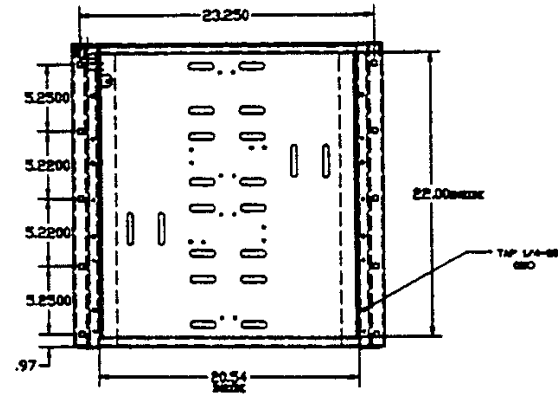


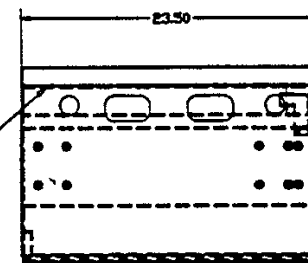
REVISIONS				
ZONE	LTR	DESCRIPTION	DATE	APPROVED

DUST COVER
REMOVED FOR CLARITY



② SCREW DRAWER TO
FRAME USING #3/8-16
BOLTS (GRD. 5) X 1" LG.
WITH A #3/8" LOCKWASHER
AND A #3/8" FLATWASHER
(4X PER SHELF)

ASSEMBLE THE DUST COVER USING THE
FOLLOWING HARDWARE:
#3/8-16 X 1" LG. (GRD.#5) CARRIAGE BOLT (10X)
#3/8 FLATWASHER (10X)
#3/8 LOCKWASHER (8X)
#3/8 "SHAKEPROOF" WASHER (2X)(REAR HOLES)
#3/8-16 (GRD.#5) HEX NUT (10X)



NOTES:
FINISH-EPOXY POWDER, ASA 61 GREY
ASSEMBLY IS QUALIFIED AND
CERTIFIED FOR UBC SEISMIC ZONE 4
COVER INCLUDES RELAY RACK MOUNTING
HOLES

THIS DOCUMENT CONTAINS PROPRIETARY DATA
OF SHFT AND JCI. NO REPRODUCING, REPRODUCTION,
OR USE OF ANY PART THEREOF MAY BE MADE
WITHOUT WRITTEN PERMISSION. THIS IS A CAD
GENERATED DRAWING. NO MANUAL CHANGES
ALLOWED.

BILL OF MATERIALS			
QTY	ITEM	PART NUMBER	DESCRIPTION
4	3	MM125-180	BATTERY HOLDOWN (NOT SHOWN)
1	2	MRDC-L	DUST COVER
1	1	MRB-L	Z-4 SLIDING BATTERY SHELF-BASE

UNLESS OTHERWISE SPECIFIED DIMENSIONS ARE IN INCHES TOLERANCES FRACTIONS DECIMALS FRACTIONS ± 1/16 3 PLACE DECIMALS ± .003 2 PLACE DECIMALS ± .005		CONTR. DRAWN RVS 6/18/97		JOHNSON CONTROLS, INC. SPECIALTY BATTERY	
MATERIAL:		CHECKED		CTEL12-125/6-180)Z-4 MODULAR SINGLE BAY SYSTEM - 1 TIER	
FINISH:		APPROVED		SIZE D CODE IDENT NO. SBML-1T REV.	
NEXT ASSY	USED ON	GOVT ACT APPL.		SCALE: SHEET 1 OF 1	
APPLICATION		GOVT ACT APPL.			